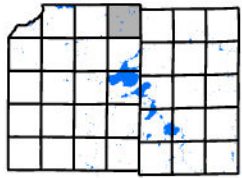
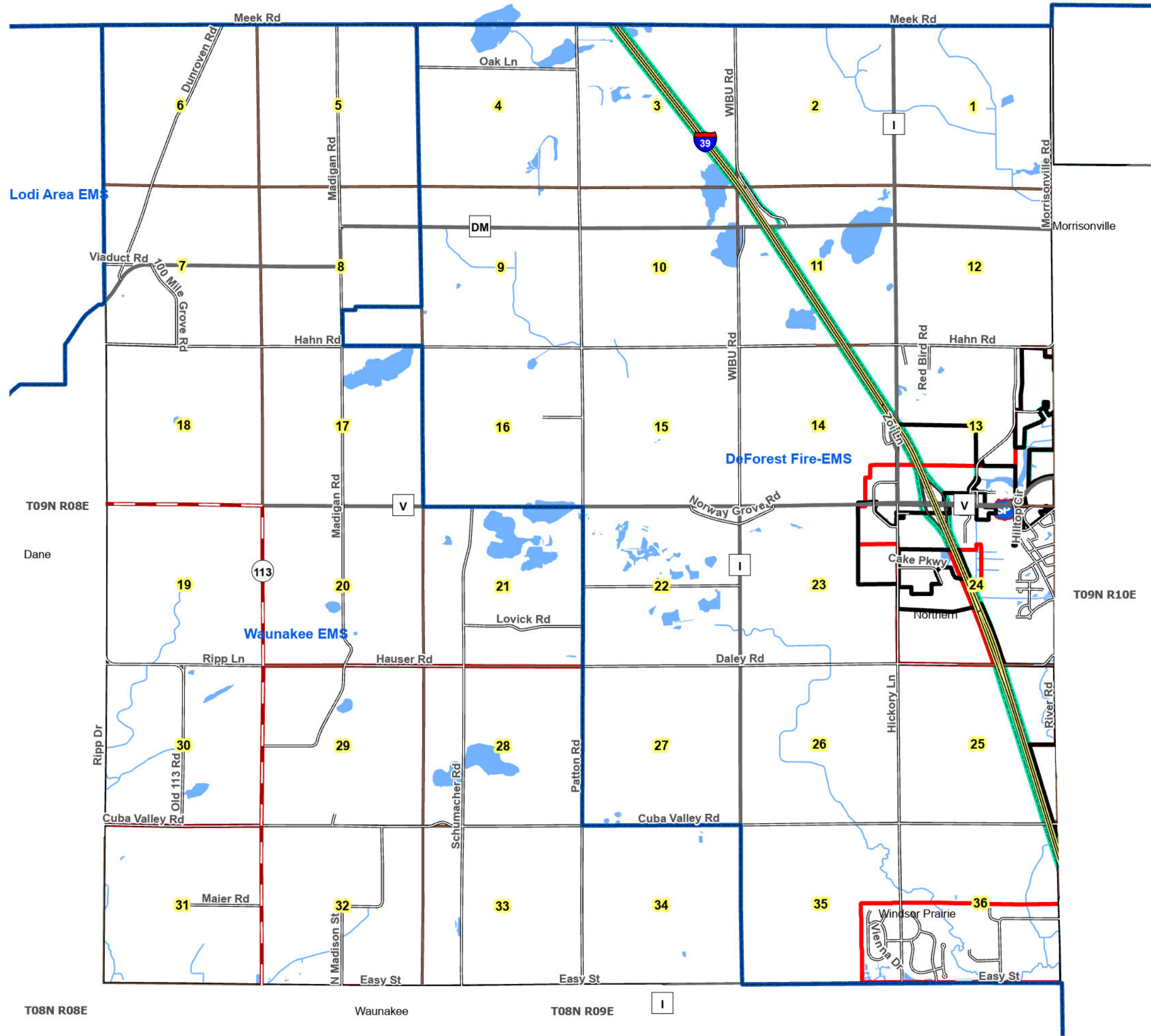






Town of Cross Plains

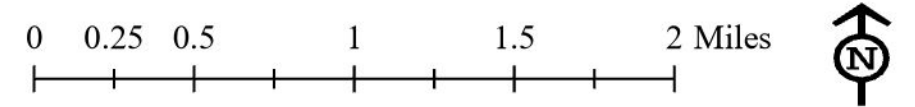


EMS, Fire District and Sheriff Precinct



-  Wisconsin State Patrol
-  EMS Districts
-  Fire Districts
-  Law Enforcement District

September, 2023



Source Info:
 EMS District: 2023 (DCLIO)
 Fire District: 2023 (DCLIO)
 Law Enforcement District: 2023 (DCLIO)
 Village Boundary: 2023 (DCPD)
 Service Areas: 2023, (CARPC)

This map was prepared through the Dane County Department of Planning and Development in conjunction with the Dane County Land & Water Resources Department, Dane County Land Information Office and the Capital Area Regional Planning Commission

Lodi Area EMS

DeForest Fire-EMS

Waunakee EMS

T08N R08E

Waunakee

T08N R09E

I

T09N R10E

This map was prepared through the Dane County Department of Planning and Development in conjunction with the Dane County Land & Water Resources Department, Dane County Land Information Office and the Capital Area Regional Planning Commission