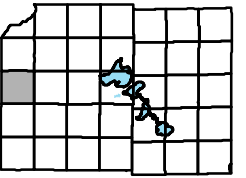
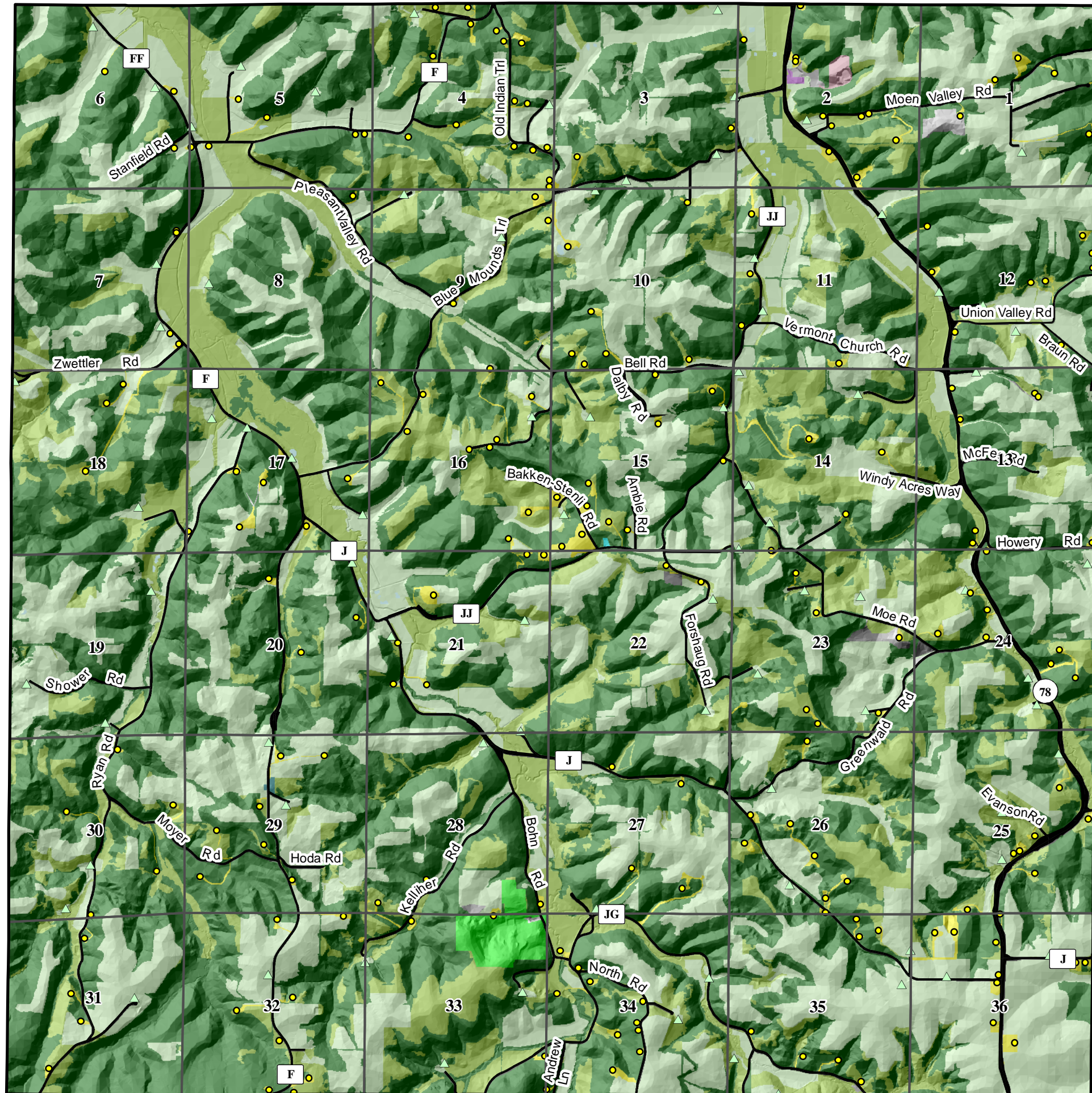


# Town of Vermont

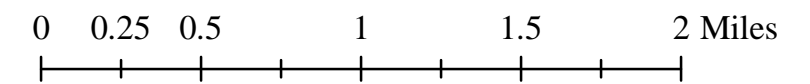


## 2005 Land Use



- |  |                                 |  |                               |
|--|---------------------------------|--|-------------------------------|
|  | Section Boundary                |  | Agriculture                   |
|  | Single Family Home              |  | Cemetery                      |
|  | Farm Dwelling                   |  | Extractive                    |
|  | Agricultural Accessory Building |  | Industrial                    |
|  |                                 |  | Institutional or Governmental |
|  |                                 |  | Open Land                     |
|  |                                 |  | Outdoor Recreation            |
|  |                                 |  | Right of Way                  |
|  |                                 |  | Single Family                 |
|  |                                 |  | Transportation                |
|  |                                 |  | Water                         |
|  |                                 |  | Woodland                      |

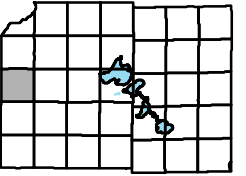
Oct., 2008



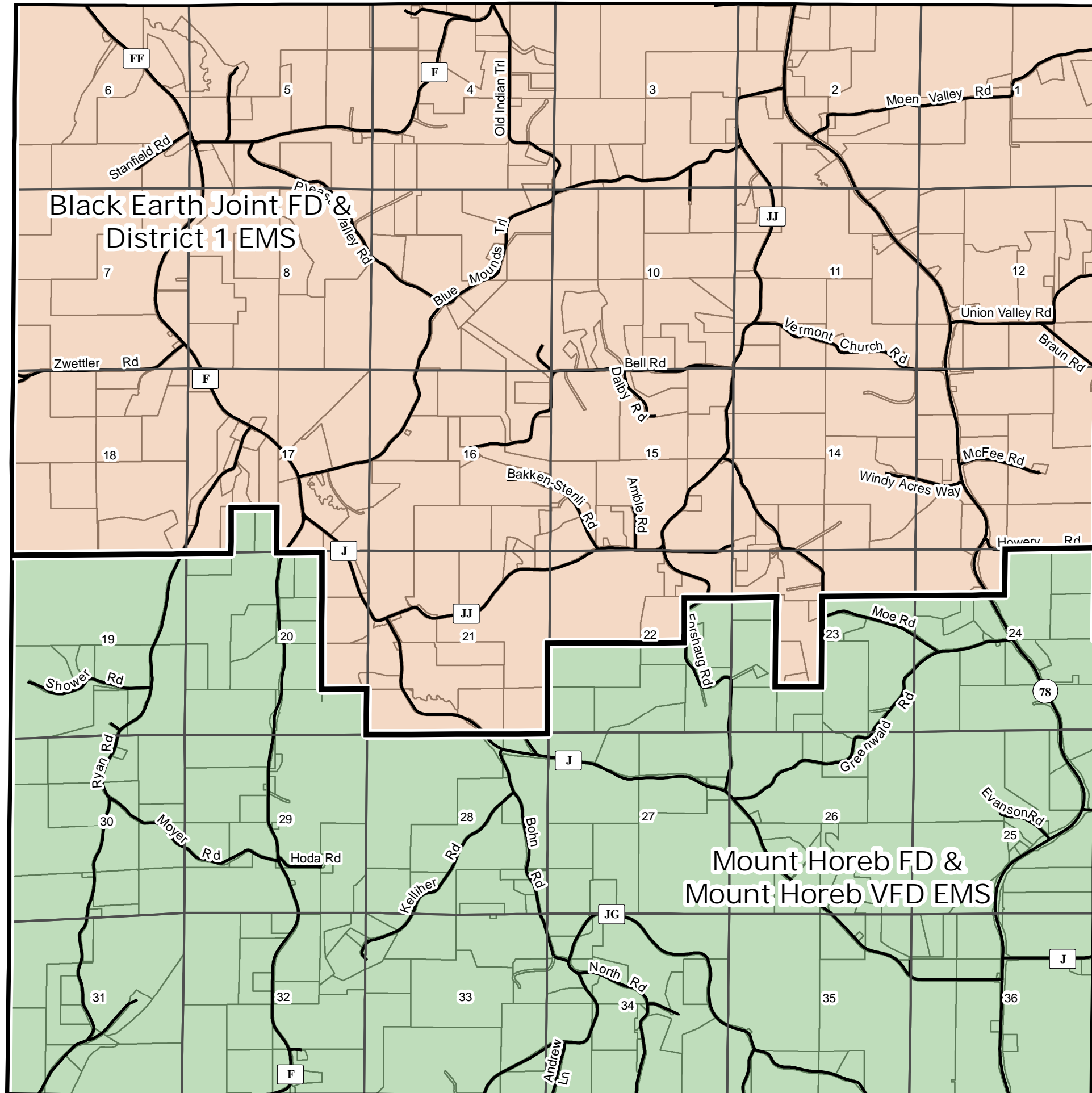
Source Info:  
Land Use: 2007, (CARPC)

This map was prepared through the Dane County Department of Planning and Development in conjunction with the Dane County Land & Water Resources Department, Dane County Land Information Office and the Dane County Community Analysis & Planning Division.

# Town of Vermont



## EMS, Fire District and Sheriff Precinct



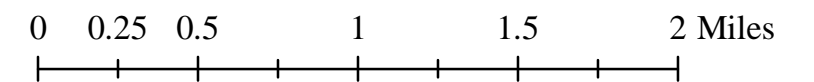
The entire Town of Vermont is within the W2 (Whiskey 2) Sheriff Precinct.

The Black Earth Joint Fire Department is located at  
711 Blue Mounds ST  
Black Earth, WI 53515

The Mount Horeb Fire Department is located at  
120 S First ST  
Mount Horeb, WI 53572

District One EMS Station is located at  
316 W. Commercial St  
Mazomanie, WI 53560

Oct., 2008



Source Info:  
EMS Districts: 2007, (DCLIO)  
Fire Districts: 2007, (DCLIO)  
Sheriff Districts: 2007, (DCLIO)

This map was prepared through the Dane County Department of Planning and Development in conjunction with the Dane County Land & Water Resources Department, Dane County Land Information Office and the Dane County Community Analysis & Planning Division.