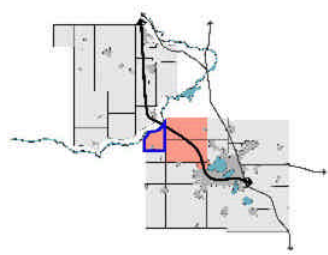


**Planned Land Use**

- Agricultural Preservation Areas**
    - Preserve productive agricultural lands in long-term.
    - Includes woodlands and non-tiltable slopes.
    - Allow agriculture-related & farm family businesses.
    - One house per 40 acres owned.
  - Agricultural Transition Areas**
    - Preserve in agriculture and open space until development may be appropriate.
    - Town may identify these lands in future for more intensive development.
    - Some policies as Agricultural Preservation Areas until then.
  - Rural Development Areas**
    - Lower density residential development served by on-site waste disposal systems.
    - Limited neighborhood-serving commercial & institutional uses.
    - Minimum lot size 2 acres.
  - Rural Development Areas with Environmental Constraints**
    - Open space corridors within planned residential development areas.
    - Development may be constrained by floodplain & wetland zoning.
  - Open Space Corridors**
    - Continuous systems of open space as mapped by DCRPC.
    - Based mainly on drainageways and stream channels, floodplains, wetlands, and other features.
  - General Business**
  - Recreational Lands**
  - Surface Water**
- 
- Landfills (Closed or Inactive)**
  - Existing Roads**
  - Town of Mazomanie Boundary**
  - Village of Mazomanie Urban Service Area**
  - Lower Wisconsin State Riverway Boundary**

3500 0 3500 Feet



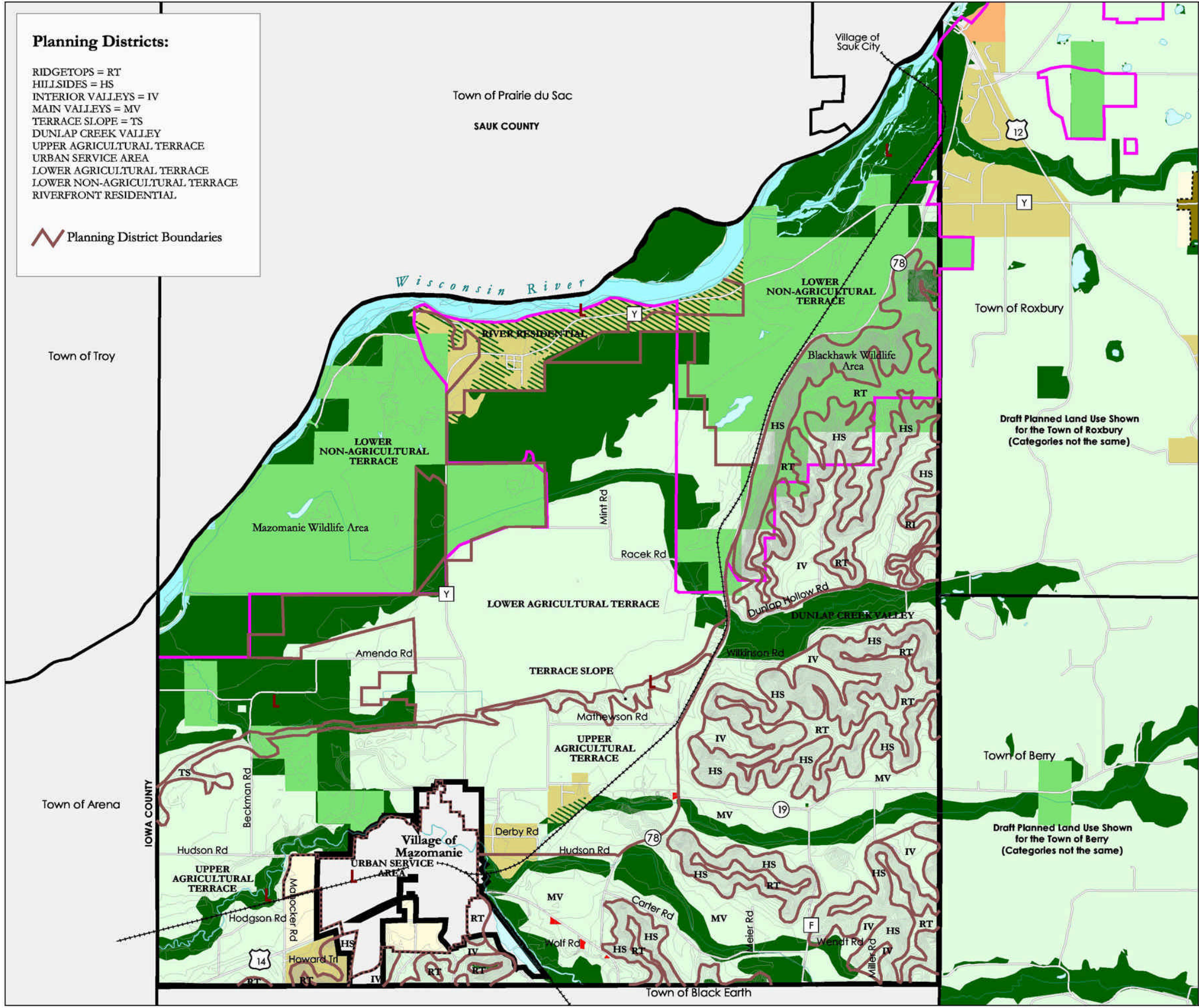
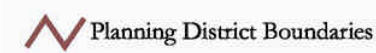
Adopted: April 23, 2002.  
Sources: Dane County Land Information Office & Dane County Regional Planning Commission.  
Vandewalle & Associates & Town Update.

**Vandewalle & Associates**  
Madison & Milwaukee, Wisconsin  
Planning - Creating - Rebuilding



**Planning Districts:**

- RIDGETOPS = RT
- HILLSIDES = HS
- INTERIOR VALLEYS = IV
- MAIN VALLEYS = MV
- TERRACE SLOPE = TS
- DUNLAP CREEK VALLEY
- UPPER AGRICULTURAL TERRACE
- URBAN SERVICE AREA
- LOWER AGRICULTURAL TERRACE
- LOWER NON-AGRICULTURAL TERRACE
- RIVERFRONT RESIDENTIAL



Town of Troy

Town of Arena

Town of Prairie du Sac

SAUK COUNTY

Village of Sauk City

Town of Roxbury

Draft Planned Land Use Shown  
for the Town of Roxbury  
(Categories not the same)

Town of Berry

Draft Planned Land Use Shown  
for the Town of Berry  
(Categories not the same)

Town of Black Earth

IOWA COUNTY

Wisconsin River

Mazomanie Wildlife Area

LOWER NON-AGRICULTURAL TERRACE

RIVERFRONT RESIDENTIAL

Blackhawk Wildlife Area

LOWER AGRICULTURAL TERRACE

TERRACE SLOPE

UPPER AGRICULTURAL TERRACE

UPPER AGRICULTURAL TERRACE

Village of Mazomanie  
URBAN SERVICE AREA

Town of Black Earth