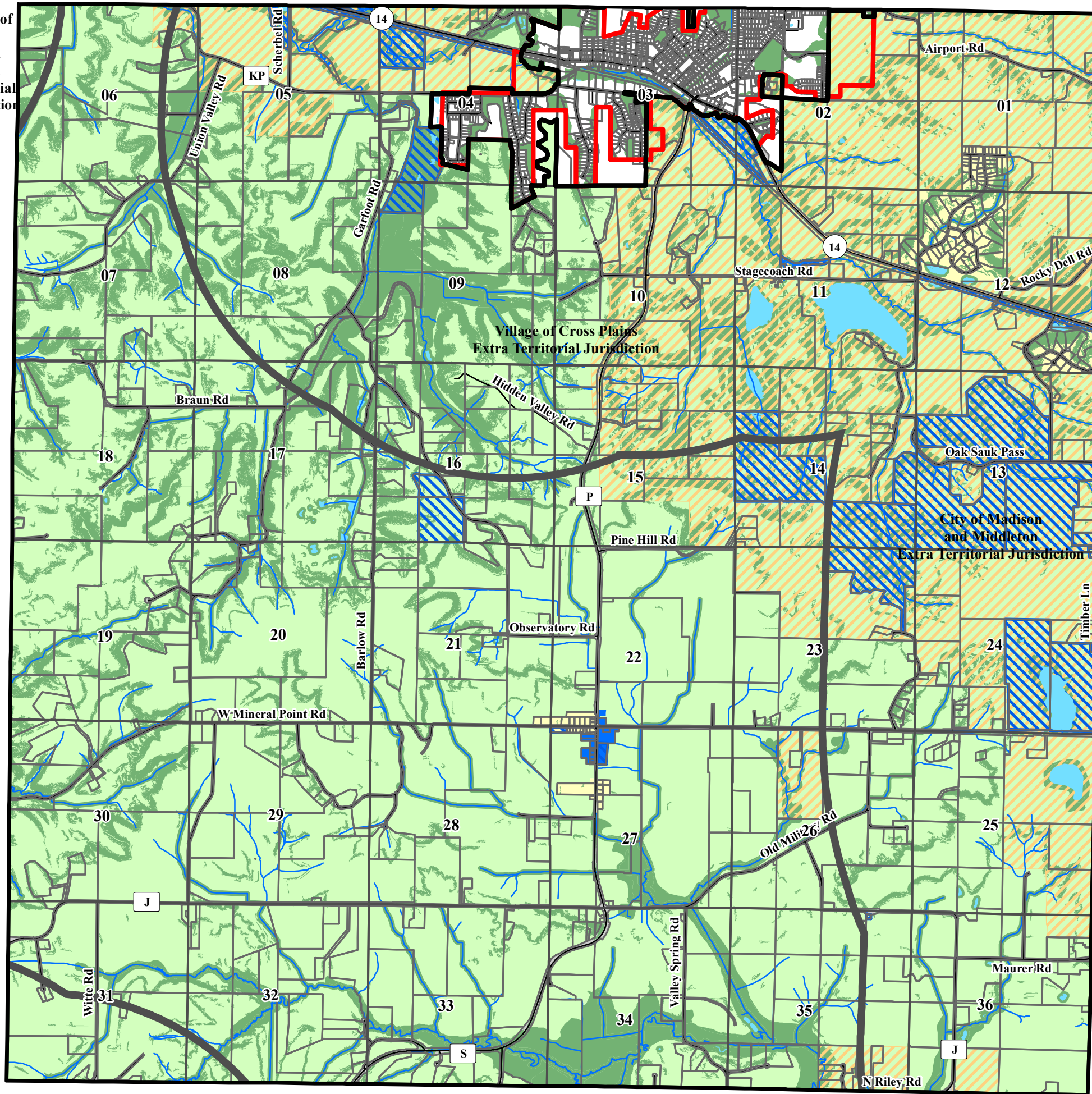
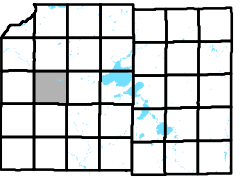


Village of
Black
Earth
Extra
Territorial
Jurisdiction



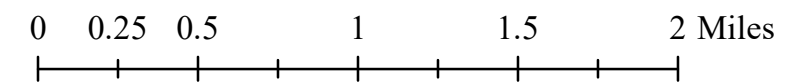
Town of Cross Plains



Planned Land Use

-  Extra Territorial Jurisdiction
- Planning Areas**
- Planned Land Use**
-  Farmland Preservation
-  Pine Bluff Crossroads
-  Rural Residential
-  Resource Protection Corridors
-  Urban Service Area
-  Public Lands Overlay
-  Voluntary Conservation Overlay

April, 2024



Source Info:
 Agricultural Preservation Area: 2023 (DCPD)
 Environmental Protection Area: 2017 (DCPD)
 Extra Territorial Jurisdiction: 2023 (DCPD)
 Municipal Boundary: 2023 (DCPD)
 Rural Development District: 2023 (DCPD)
 Service Areas: 2023, (CARPC)

This map was prepared through the Dane County Department of Planning and Development in conjunction with the Dane County Land & Water Resources Department, Dane County Land Information Office and the Capital Area Regional Planning Commission